

THE FUTURE IS NOW

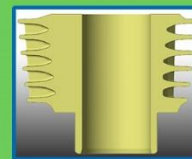
SUPER Z
150FI

BE PERFECTLY FLEEK!



*Photo may vary from actual unit

New Engine Cylinder Design
Extended 5 Year Warranty for Cylinder



KYMCO-CABC TECHNOLOGY
(CERAMIC ALUMINUM BORE COATING)

- + REDUCING DRAG INSIDE THE ENGINE
- + IMPROVING FUEL CONSUMPTION AND MORE HORSE POWER
- + LIGHTER WEIGHT
- + EXTENDS CYLINDER DURABILITY

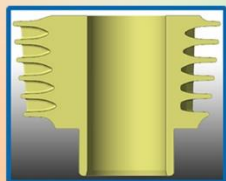


YOUNG • BOLD • FUN • CONNECTED

EQUIPPED WITH WATERPROOF 12 VOLT USB CHARGER



SPECIAL FEATURES



HIGHLY IMPROVED 150cc FUEL INJECTED ENGINE WITH CERAMIC ALUMINUM BORE COATING TECHNOLOGY FOR BETTER FUEL CONSUMPTION

SPECIFICATIONS

| | |
|--------------------------------|------------------------------------|
| ENGINE TYPE | 4-Stroke, Single Cylinder, 2-Valve |
| COOLING SYSTEM | Force Air Cooling |
| FUEL SYSTEM | Fuel Injection |
| ACTUAL DISPLACEMENT | 149.6 cc |
| MAX HORSEPOWER ENGINE (kW/rpm) | 8.0 kW @ 7,500rpm |
| MAX. TORQUE (Nm/rpm) | 10.8 Nm @ 7,500rpm |
| COMPRESSION RATIO | 9.2 ± 0.2:1 |
| TRANSMISSION TYPE | CVT / Belt Drive |
| IGNITION SYSTEM | Electric Control Unit (ECU) |
| STARTING SYSTEM | Electric |
| DRY WEIGHT AMOUNT | 114 kg |
| L x W x H | 1935 mm x 690 mm x 1120 mm |
| WHEELBASE | 1310 mm |
| FUEL TANK CAPACITY | 4.6 Liters |
| FRONT WHEEL SIZE | 80/90-14 |
| REAR WHEEL SIZE | 90/90-14 |
| FRONT SUSPENSION | Telescopic Forks |
| REAR SUSPENSION | Unit Swing (Double Suspension) |
| FRONT BRAKE SYSTEM | Disc |
| REAR BRAKE SYSTEM | Drum Brake |



20 LITER UNDER SEAT COMPARTMENT CAN FIT 1 HALF FACE HELMET



LED TAIL LIGHT FOR BETTER VISIBILITY AND SAFETY



HELMET HOLDER, USB CHARGING PORT, 2 OPEN FRONT COMPARTMENT



FLOOR BOARD SPACE CAN FIT A 5 GALLON WATER CONTAINER



ACCESSIBLE FUEL FILLER CAP



IMPROVED INSTRUMENTATION PANEL FOR HIGHER VISIBILITY



TWIN HEAD LAMP WITH H1 HALOGEN BULB AND LED PARK LAMP



BUILT WITH OEM TOP CASE CARRIER

AVAILABLE COLORS

MATTE BLUE



MATTE RED



ORANGE

